



**INDUSTRIAL ROLLING DOORS
AND GRILLES
PRODUCTS FOR BUSINESS**



KRISPOL

KRISPOL

DOORS FOR DEMANDING CUSTOMERS

R1SDP STEEL DOOR, INSULATED

KRISPOL – A RELIABLE BUSINESS PARTNER

KRISPOL is a leading European manufacturer of doors and a leader in innovation in product technology and design. We have two modern production facilities fully equipped with machinery. We supply our products to over a dozen countries in Europe, covering more than 2 million kilometres a year

TRIED AND TESTED SOLUTIONS FOR BUSINESS

WE THINK OF EVERYTHING



INSTALLATION

QUICK AND PROFESSIONAL

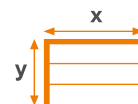
A manufacturing process based on the latest technology enables the entire order to be completed very quickly. This allows all products to be installed in a short time and, most importantly, simultaneously.



SERVICE

EVERYTHING UNDER CONTROL

Periodic inspections are carried out by qualified KRISPOL sales staff. We provide a guarantee of product reliability and professional service and installation at the highest level.



PRODUCTS

MADE TO MEASURE

If you are looking for a door for your company with unusual dimensions, guiding system or application, you will find help at KRISPOL sales outlets. Our production locations deliver personalised and safe solutions of excellent quality.



CE CERTIFICATE

Our products are fully compliant with the requirements of EN 13241-1, meaning that they meet all the necessary quality and safety standards.



AIR PERMEABILITY

class 1



WIND RESISTANCE

Wind load resistance - class 4



WARRANTY

Products are provided with a 2-year warranty



RESISTANCE TO WATER PENETRATION

Class 1 for R1 ADP Comfort



RELIABILITY

the door will not fail for up to 33,000 cycles

TYPES OF **ROLLING DOORS**



Rolling industrial doors must be reliable, robust and secure. Our range includes a number of special solutions, enabling the door to be tailored to the way it is installed, its specific applications and the conditions in which it will be used. The main advantage of rolling doors is their design. The door armouring is rolled up onto a shaft positioned above the opening, so that the space under the hall ceiling remains free. This is important when room height is a key factor. KRISPOL offer

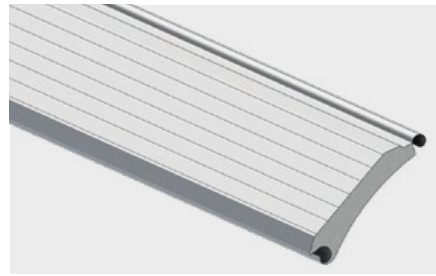
includes steel and aluminium doors. Insulated doors, indispensable in areas where it is important to maintain temperature, are constructed from profiles filled with polyurethane foam and sealed around the entire perimeter. Non-insulated doors are constructed from single-wall steel or aluminium profiles. It is an economical offering, ideal for the interiors of industrial buildings and buildings that do not require thermal insulation.

Industrial doors serve very different purposes. We manufacture them to the exact dimensions indicated, using solutions to adapt the equipment to different tasks and installation conditions. These include profiles with windows and ventilation profiles and, in cold doors, perforated profiles. An interesting proposal is the so-called 'tattoo door', i.e. with individually designed armoured perforation, e.g. with a pattern referring to the activity carried out at the facility.



**INSULATED ALUMINIUM
PROFILE**

with 100 mm coverage height



**INSULATED STEEL
PROFILE**

with 95 mm coverage height



**SINGLE-WALL ALUMINIUM
PROFILE**

with 91 mm coverage height



**SINGLE-WALL STEEL
PROFILE**

with 91 mm coverage height

**R1 SSP DOOR MADE
OF SINGLE-WALL
STEEL PROFILES**

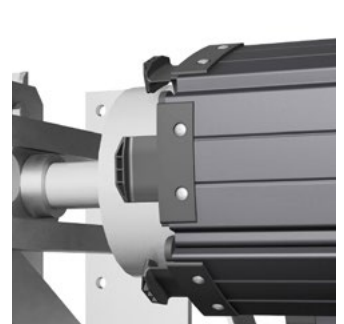
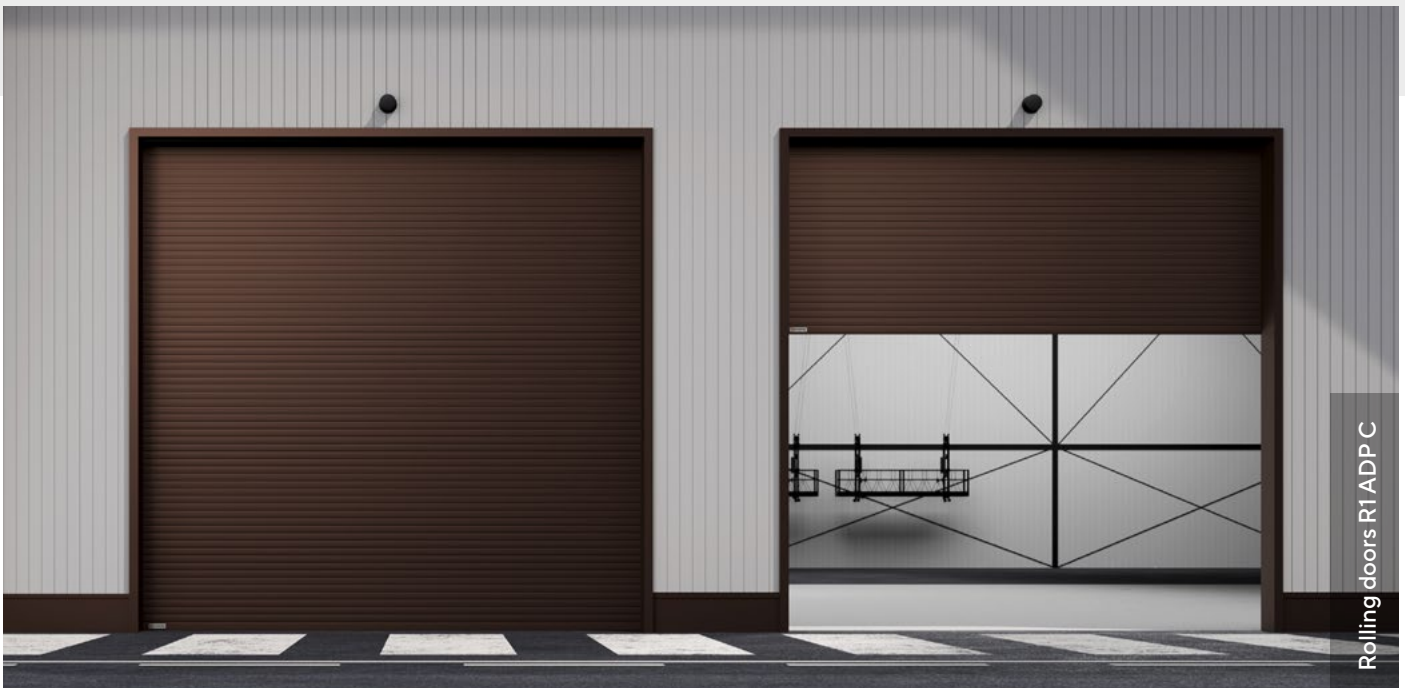
Due to its strength, it allows for building very wide structures.



R1 ADP C

Advantages

width up to 6850 mm, height up to 6850 mm	side or tubular operator
door armoured available in 6 basic colours	armouring with increased resistance to abrasion
single-piece aluminium housing painted in all RAL colours	aluminium guides - 120 mm and 150 mm
guides equipped with guide rollers	aluminium lintel bar with seal
water penetration protection class 1	storm (wind) hooks. Achievable wind class 4
> 5500 mm high – roller brackets	seals placed inside the guide
rounded profiles to minimise noise	modern design



R1 SDP

Advantages

width up to 8000 mm, height up to 5500 mm

side tubular operator (10 cycles per day) or side jackshaft operator (5 to 10 cycles per hour, and optionally 30 cycles per hour)

profile thickness 22 mm

steel door with double-walled profile filled with polyurethane foam

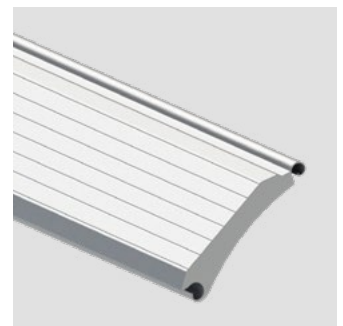
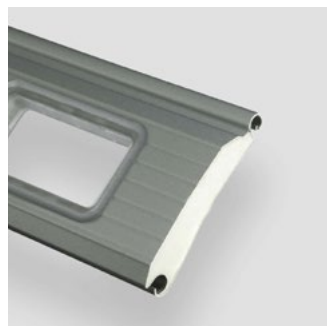
armouring colour galvanised steel
(11 basic RAL colours optional)

wind class 3

(optional) 65 mm wide side brush seals, mounted on guides

emergency release by crank or chain, depending on the type of operator

steel guides fitted with plastic slides (seals)



R1 SSP, R1 SSG

Advantages

width up to 8000 mm, height up to 5500 mm	side tubular operator (10 cycles per day) or side jackshaft operator (5 to 10 cycles per hour, and optionally 30 cycles per hour)
manually operated door with spring system	Standard profile colour : galvanised steel (can be painted in all RAL colours - optional)
in side-operator doors, the winding shaft is mounted on galvanised fixed brackets	wind class 3
burglary resistance RC3 (EN 1627:2012 P)	optical edge protection
emergency release by crank or chain, depending on the type of operator	powder-coating of the housing, guides and lower profile in RAL colours (optional)
special profiles for additional ventilation area	steel guides fitted with plastic slides (seals)

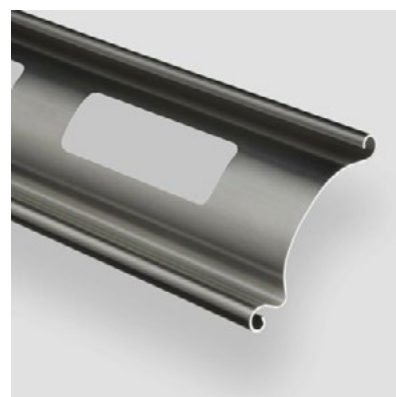


R1 SSP, R1 SSG

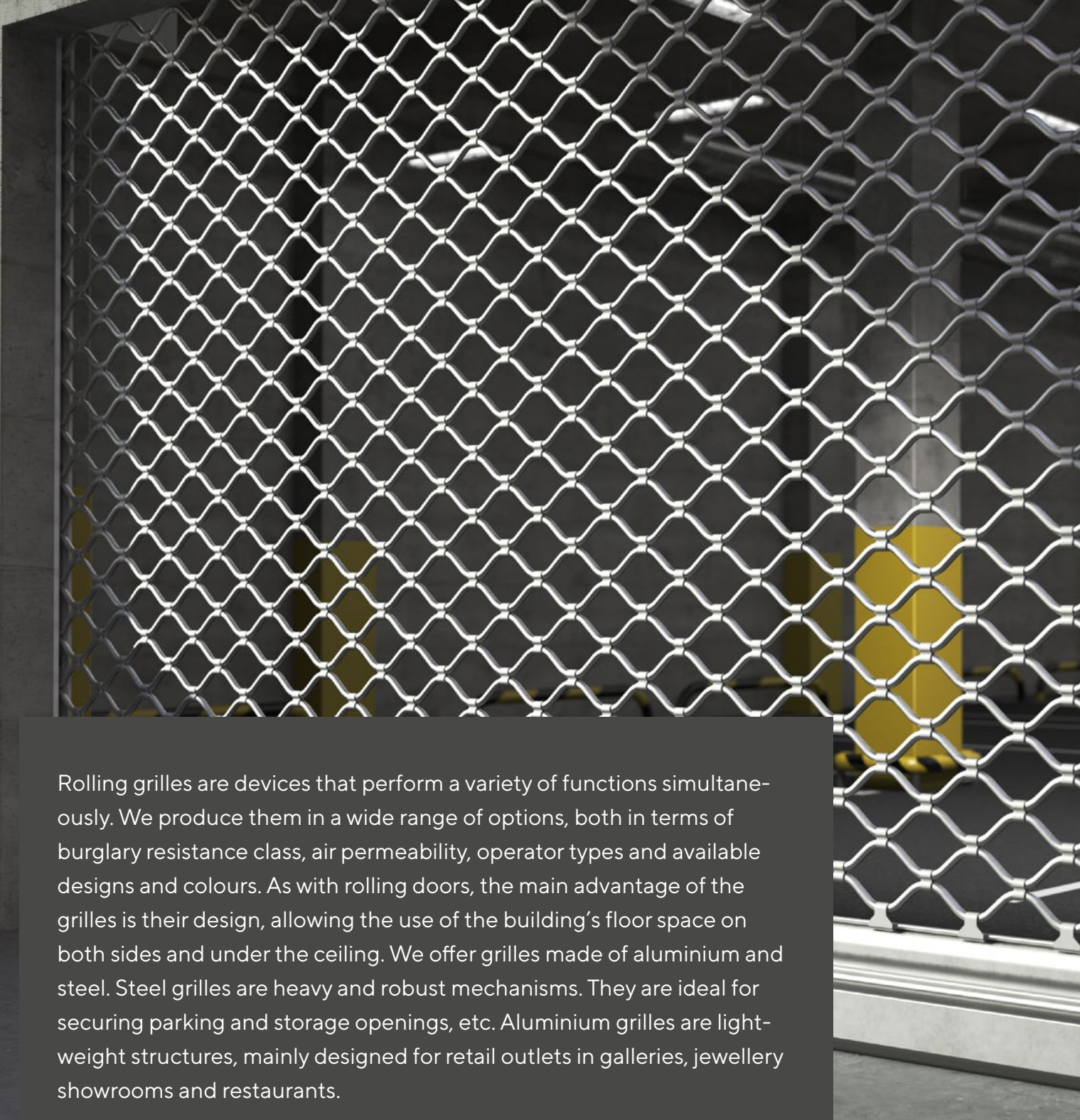
R1 ASP, R1 ASG

Advantages

width up to 8000 mm, height up to 5500 mm	side tubular operator (10 cycles per day) or side jackshaft operator (5 to 10 cycles per hour, and optionally 30 cycles per hour),
manually operated door with spring system	single-wall aluminium profiles (can be painted in all RAL colours - optional)
in side-operator doors, the winding shaft is mounted on galvanised fixed brackets	wind class 3
burglary resistance RC3 (EN 1627:2012 P) (optional)	lock in base (optional)
emergency release by crank or chain, depending on the type of operator	steel guides fitted with plastic slides (seals)



TYPES OF **ROLLING GRILLES**



Rolling grilles are devices that perform a variety of functions simultaneously. We produce them in a wide range of options, both in terms of burglary resistance class, air permeability, operator types and available designs and colours. As with rolling doors, the main advantage of the grilles is their design, allowing the use of the building's floor space on both sides and under the ceiling. We offer grilles made of aluminium and steel. Steel grilles are heavy and robust mechanisms. They are ideal for securing parking and storage openings, etc. Aluminium grilles are light-weight structures, mainly designed for retail outlets in galleries, jewellery showrooms and restaurants.

The appearance and design of rolling grilles depend on the locations in which they are installed and the functions they perform. In rooms that should not only be secure, but also exposed, grilles made of straight or sinusoid-shaped steel tubes work well. For modern interiors that require a high level of ventilation, aluminium grilles with rectangular-shaped openings are a perfect fit. Grilles made of steel and aluminium perforated profiles simultaneously provide an optical obscuration and an air permeability of 28%. Aluminium grilles and steel grilles made of perforated profiles can be painted in one of 200 RAL colours.



Rolling grilles R2 SSP



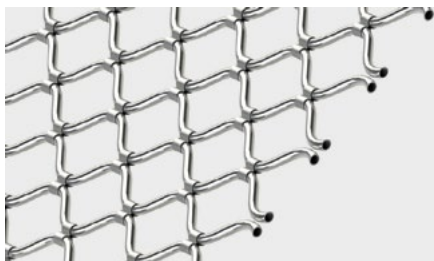
ALUMINIUM OR STEEL PROFILE PERFORATED

with a coverage height of 91 mm



PUNCHED ALUMINIUM SHEET PROFILE

with a coverage height of 60 or 85 mm



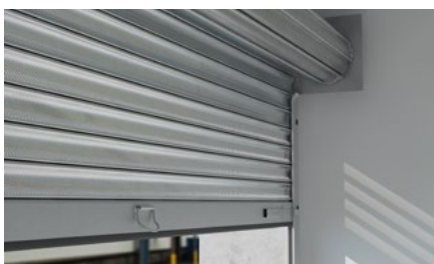
SINUSOID PROFILED STEEL TUBE

140 x 90 mm openings, ventilation area 70%

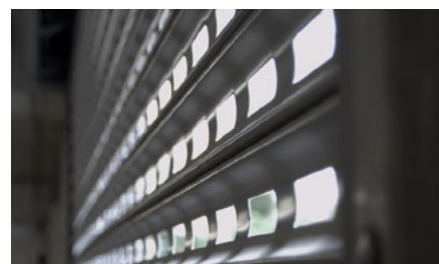


STRAIGHT STEEL TUBE WITH CROSSBARS

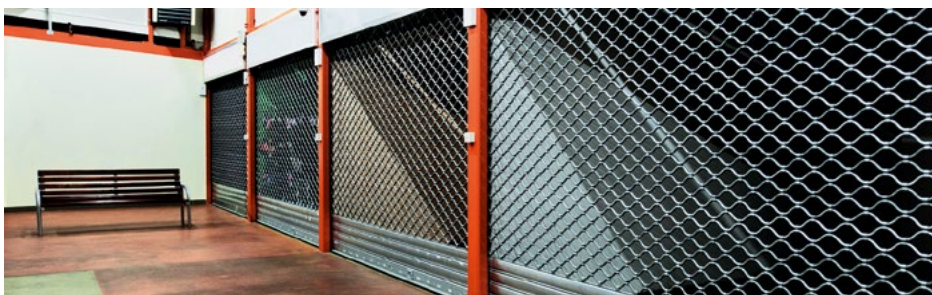
250 - 380 x 100 mm openings, ventilation area 80%



R2 SPG PERFORATED GRILLE



R2 AMP ROLLING GRILLE



R2 SSG SINUSOID-SHAPED ROLLING GRILLE

SAFETY AND RELIABILITY

The doors with a jackshaft operator are equipped with a self-locking gearbox, which prevents unwanted retraction of the shell. In contrast, products without such an operator are provided with other anti-drop protection, such as an inertial brake or, in the case of manually operated products, protection in the event of spring breakage.



LIGHT INDICATOR
red/green



SAFETY
in case of spring breakage



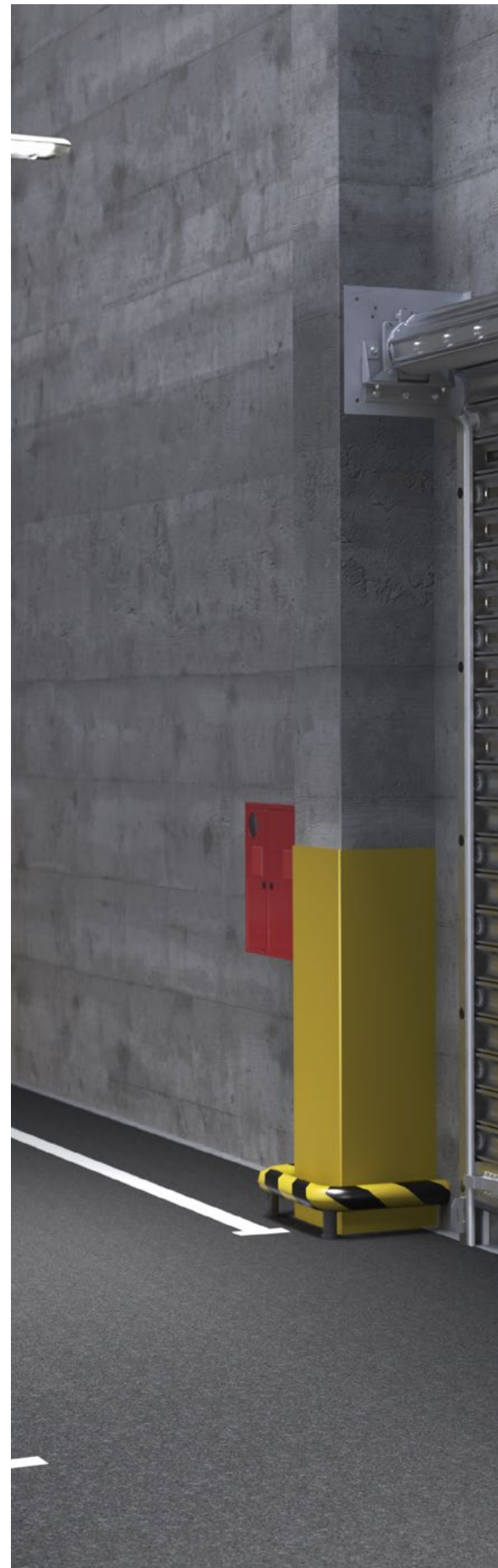
PHOTOCELL
one-way, IP65

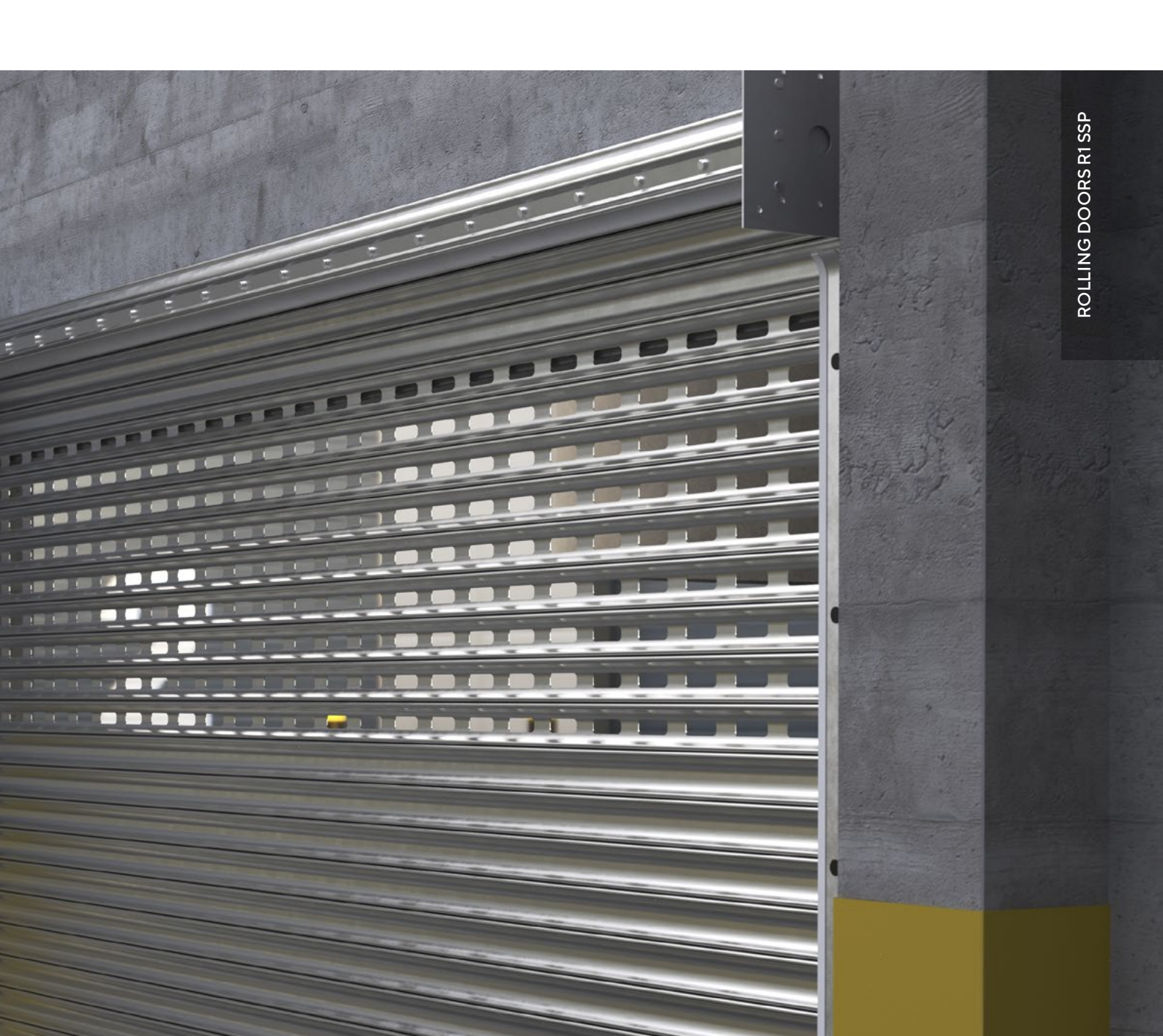


BOLT LOCK
in the base bar



INERTIAL BRAKE
for use on tubular operator doors and grilles

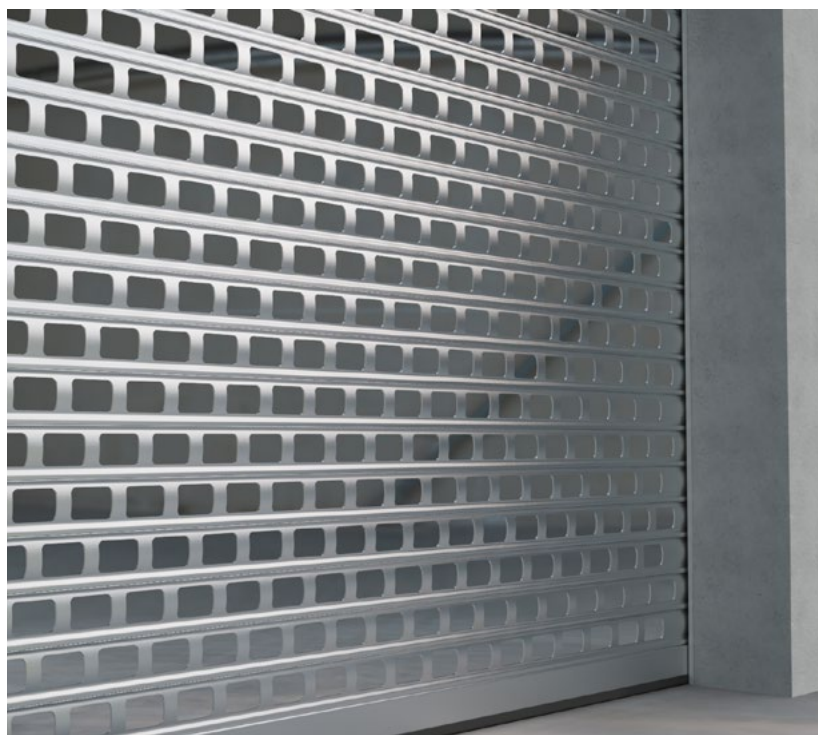




We optionally manufacture grilles and doors in two classes of burglary resistance: RC2 and RC3 (EN 1627:2011). The burglary protection is provided by a bolt lock, mounted in the base bar of the armouring, which prevents opening locked doors from the outside. Access to the facilities that require special protection is additionally secured by means of access cards or code keypads. The device's control signal call can be encrypted with up to an 8-digit code. With rolling grilles, it is also important to bear in mind safety when opening. The shaft winding protection detects elements stuck to the armouring during opening and stops the grille.

GRILLES

AMG / AMP



Width	6750 mm
Height	5500 mm
Drive type	Tubular (10 cycles/day) or jackshaft (5-10 cycles/h, opt. 30)
Operation	Manual, with spring system
Winding protection	Yes
Burglary resistance class (optional)	RC3
Ventilation area	46 %
Opening dimensions	83 × 52 mm

SSG / SSP

Width	8200 mm
Height	5500 mm
Drive type	Tubular (10 cycles/day) or jackshaft (5-10 cycles/h, opt. 30)
Operation	Manual, with spring system
Winding protection	Yes
Burglary resistance class (optional)	RC2
Ventilation area	70 %
Opening dimensions	140 × 90 mm



SCG / SCP



Width	8200 mm
Height	5500 mm
Drive type	Tubular (10 cycles/day) or jackshaft (5-10 cycles/h, opt. 30)
Operation	Manual, with spring system
Winding protection	Yes
Burglary resistance class (optional)	RC2
Ventilation area	70 %
Opening dimensions	250-380 × 100 mm

APG / SPG / APP / SPP

Width	8000 mm
Height	5500 mm
Drive type	Tubular (10 cycles/day) or jackshaft (5-10 cycles/h, opt. 30)
Operation	Manual, with spring system
Winding protection	Yes
Burglary resistance class (optional)	RC3
Ventilation area	28 %
Opening dimensions	Ø3.3 mm



GRILLES

AMZ



Width	3500 mm
Height	4000 mm
Drive type	Side tubular (15 cycles/day)
Operation	-
Winding protection	Yes
Burglary resistance class (optional)	-
Ventilation area	43 %
Opening dimensions	63 × 36 mm

Rolling grilles perform a variety of functions simultaneously. We manufacture them in different versions in terms of the type of armouring, burglary resistance class, air permeability, type of operator and colours available.

As with rolling doors, the main advantage of grilles is their design, which allows full use of the facility's usable space, primarily below the ceiling.



2-year *warranty**
Product *made to measure*
***Refined* technology**
***Single-piece* housing**

OPERATORS

FOR DOORS AND GRILLES

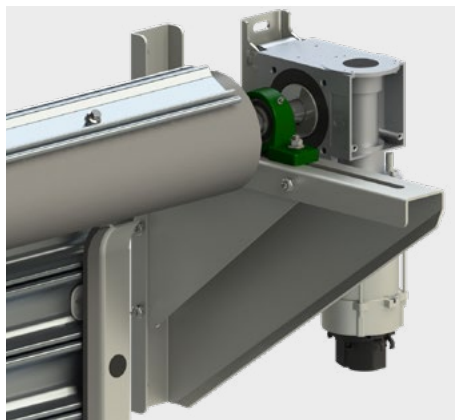
Automatic doors are not just about convenience. Functional, state-of-the-art operators also guarantee safety in use and protect the door mechanism. Depending on their intended use, dimensions, weight and installation conditions, rolling doors and rolling grilles can be driven by one of three types of electric operator.



The side jackshaft three-phase operator is the solution for intensive use products with large surfaces, due to its performance and dimensions. The side tubular single-phase operator is a new solution in the KRISPOL range. Thanks to its design, it does not require a large installation space. Recommended for heavy duty mechanisms used several times a day. The central single-phase operator is used for smaller products, for which the operation intensity is around 4 -10 cycles per day.



Rolling doors R1 SSG



**SIDE JACKSHAFT
THREE-PHASE OPERATOR**

for intensively used large doors and grilles,
e.g. for production halls.



**SIDE TUBULAR
SINGLE-PHASE OPERATOR**

thanks to its small, unobtrusive design,
works well, for example, in shopping
centres where it is used several times a day.



CENTRAL SINGLE-PHASE OPERATOR

for products used several times a day, e.g. in single-car garages.



R1 SSG ROLLING DOOR WITH CENTRAL OPERATOR



COMPREHENSIVE SOLUTIONS



EXPERTS
KNOWLEDGE
AND EXPERTISE



SERVICE
UNDER CONTROL



INSTALLATION
QUICK
AND PROFESSIONAL



www.facebook.com/KRISPOL.international

www.youtube.com/@krispolinternational

krispol.eu

Contact us:

This brochure is for advertising purposes only and does not constitute an offer within the meaning of the Act of 23 April 1964 – Civil Code. Product images and drawings shown are for illustrative purposes only and may differ from those offered in reality. Krispol Sp. z o.o. reserves the right to make changes to the product offer at any time. Any reference to the graphic elements or descriptions presented in the brochure for the purpose of selling the products shall be made at the responsibility of the entity making the sale and shall not give rise to any penal consequences for Krispol Sp. z o.o.

Update: 19.08.2025