



## R1 ADP COMFORT

### Industrial rolling door



*Comfort, safety and space optimization*

# R1 ADP COMFORT

## Industrial rolling door



The **R1 ADP COMFORT** industrial rolling door is a high-quality product that has been designed to meet the most demanding needs of industrial and warehouse facilities with high passages. It is ideal for sites that require a reliable, durable and efficient locking system that can withstand the daily challenges of heavy use. One of the key advantages of the R1 ADP COMFORT rolling industrial door is its design, which allows for maximum use of space. The rolling up shell concealed in the upper part of the opening translated into much more space and the possibility of using the entire space in your warehouse or production area. This is an ideal solution for places where every square centimetre matters.

The door guarantees uninterrupted operation even in the most demanding conditions due to the use of modern technologies and high-quality materials. Its solid construction and modern technical solutions make it a product that must meet the needs of any company that values safety, functionality and aesthetics.

The use of advanced drives and guiding systems makes the R1ADP Comfort rolling industrial doors operate quietly and smoothly. Its additional advantage is quick installation and minimal maintenance.

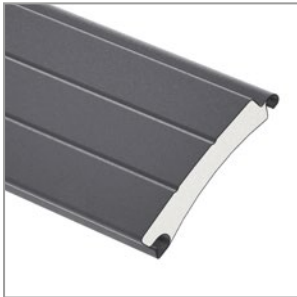
# Advantages of the „Comfort“ version of the industrial rolling door:



**Lateral drive system**



**Tubular lateral drive**



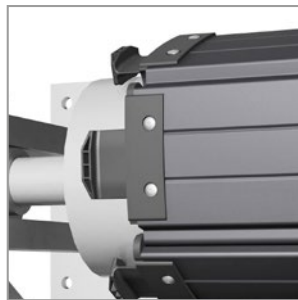
**100mm-high aluminum profile**



**Aluminum guide rail with guide roller**



**Shell with increased abrasion resistance**



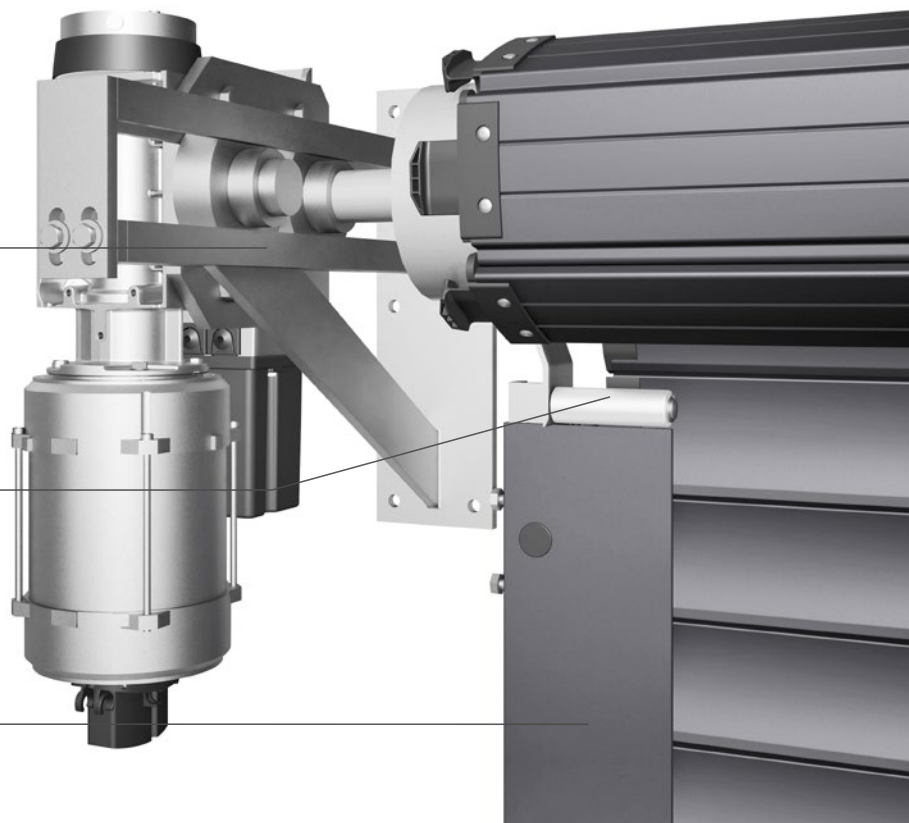
**Storm hooks**

- » width up to 6850 mm, height up to 6850 mm,
- » slip on drive or tubular drive,
- » as standard, the housing is available in 6 basic colours,
- » the coating of the housing is covered with an additional varnish, which gives greater resistance,
- » one-piece, aluminum casings painted in all RAL colours are available,
- » the door is equipped with 120 mm or 150 mm aluminium tracks,
- » the tracks are equipped with guide rollers,
- » aluminum lintel strip with a gasket is available in standard colours,
- » class 1 of water penetration resistance,
- » wind load class 4 achievable,
- » >5500 mm in height, roller consoles have been used,
- » rubber gaskets fixed inside the track,
- » quiet operation is possible because rounded profiles minimize noise,
- » modern design of the door.

**Sliding consoles**

**Guide rollers**

**Aluminum guides**





We're focused on *garage*  
& *industrial* doors



**KRISPOL Sp. z o.o.**  
ul. Michała Strzykały 4, 62-300 Września  
tel. +48 61 662 41 00, e-mail: [biuro@krispol.pl](mailto:biuro@krispol.pl)

[www.krispol.eu](http://www.krispol.eu)