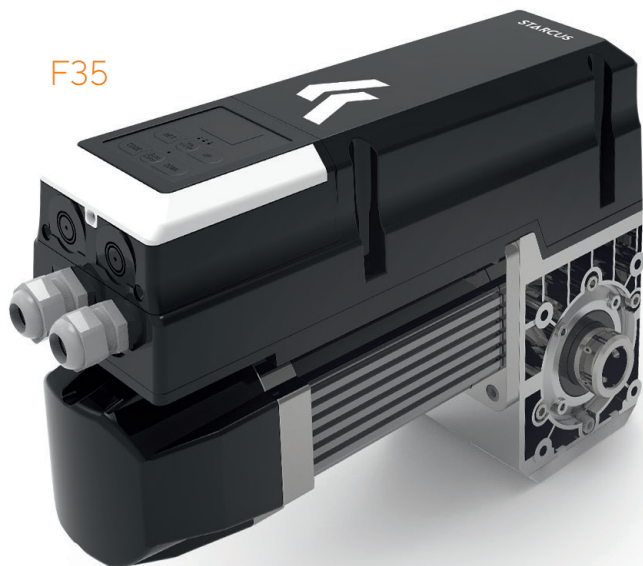


# STARCUS®

## F35 / F50 / F70

F35



F50, F70



**F35 / F50 / F70** are part of a new series of powerful industrial drives adapted to the KRISPOL brand products. STARCUS drives installed in thousands of homes and proven in everyday use have been recognisable on the European market. Based on many years of experience, we have developed a drive for doors used in an industrial environment.


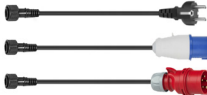
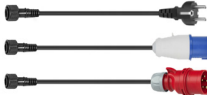
**STARCUS F** is a series of powerful motors for special operation when trouble-free, quiet operation is the must. Each drive is equipped with an inverter - i.e. a soft start and stop function, which significantly extends the operation life of the door. It is possible to adjust the speed of door opening and closing.

### STARCUS F advantages:

- **Possibility to set an intermediate position (adjustable height).**
- **Automatic function according a defined time.**
- 24 RPM - 32 RPM operating speed.
- Easy installation and intuitive programming.
- Gears are in oil bath
  - extended service life of the drive + additional gaskets used.
- Possibility to attach a wide range of accessories, including light curtains.
- Alarm settings according to defined number of cycles
  - maintenance service reminder.
- Adjustable sensitivity of amperometric detection.
- Expandable control via Smart Home App possible.
- 20 cycles per hour.
- 24V DC voltage control unit - safe work
- Quick and easy emergency operation (ER unlocking and/or chain).
- Can be connected to a fire alarm control panel.
- Built-in LED lighting.



## TECHNICAL SPECIFICATIONS

	STARCUS F35	STARCUS F50	STARCUS F70
<b>The kit contains</b>	<ul style="list-style-type: none"> <li>- Drive</li> <li>- Control pendant</li> <li>- Quick release with a rope</li> </ul>	<ul style="list-style-type: none"> <li>- Drive</li> <li>- Control panel</li> <li>- Quick release with a rope</li> <li>- Chain transmission module</li> </ul>	<ul style="list-style-type: none"> <li>- Drive</li> <li>- Control panel</li> <li>- Chain transmission module</li> </ul>
<b>Max. door area</b>	18 m <sup>2</sup> <sup>(1)</sup>	22 m <sup>2</sup> <sup>(1)</sup>	28 m <sup>2</sup> <sup>(1)</sup>
<b>Maximum torque</b>	35 Nm	50 Nm	70 Nm
<b>Rated torque</b>	25 Nm	35 Nm	50 Nm
<b>Supply voltage</b> <sup>(2)</sup>	230 V 50 Hz 	230/400 V 50 Hz 	230/400 V 50 Hz 
<b>Control unit power supply</b>	24 V DC	24 V DC	24 V DC
<b>Motor power</b>	0.35 kW	0.45 kW	0.55 kW
<b>Static holding torque</b>	400 Nm	400 Nm	400 Nm
<b>Shaft rotation speed</b>	24-32 rev.	24-32 rev.	24-32 rev.
<b>Maximum number of shaft revolutions</b>	15 rev. (5 m)	15 rev. (6.5 m)	15 rev. (8 m)
<b>Shaft diameter</b>	Ø 25.4 mm	Ø 25.4 mm	Ø 25.4 mm
<b>Thermal protection temperature</b>	105° C	105° C	105° C
<b>Maximum number of cycles per hour</b> <sup>(3)</sup>	20	20	20
<b>Device protection class</b>	IP54	IP54	IP54
<b>Device operating temperature</b>	-20/+60° C	-20/+60° C	-20/+60° C
<b>Quick release with a rope</b>	included	included	no
<b>Chain transmission</b>	no	included	included
<b>Control WI-FI</b> <sup>(4)</sup>	yes	yes	yes
<b>TOTMANN</b>	yes	yes	yes
<b>IMPULS</b>	yes	yes	yes




<sup>(1)</sup> Depending on the track systems.

<sup>(2)</sup> 230V drive with adaptation to 3x400V socket.

<sup>(3)</sup> If the drive is used in the temperature exceeding + 40 °C, the maximum number of cycles is reduced by half.

<sup>(4)</sup> The possibility of connecting a Wi-Fi module.

## RECOMMENDATION

Track systems	Max. door area		
	STARCUS F35	STARCUS F50	STARCUS F70
 <b>Standard-lift track system with straight cable drums</b>	18 m <sup>2</sup>	22 m <sup>2</sup>	28 m <sup>2</sup>
 <b>High-lift track system with straight/cone cable drums</b>	18 m <sup>2</sup>	22 m <sup>2</sup>	28 m <sup>2</sup>
 <b>Vertical-lift track system with cone cable drums</b>	14 m <sup>2</sup>	18 m <sup>2</sup>	24 m <sup>2</sup>